

CLUB NAUTIQUE HOEDICAIS

'Partons, la mer est belle'

TRANSQUADRA – MADERE – MARTINIQUE - ATLANTIQUE

2024 - 2025

ANNEXE PARCOURS LA TURBALLE-MADERE

VHF Chanel for Start : 72

ANNEXE PARCOURS LA TURBALLE-MADERE

Tides Schedule La Turballe July 7 2024

HT : 6 :35PM Local, coef 78

LT : 12:42PM Local coef 78

REMINDER RRS 40 : Each competitor shall wear a personal flotation device, under Skipper responsibility.

START : Sunday July, 7 2024

START ZONE :Close to 0,5 mille in SW of La Turballe harbor

START LINE :

The starting line is formed by the pole bringing the ORANGE flag to leave to STARBOARD into line with the on course side of an inflatable YELLOW VOLVO Buoy.to leave toPORT

Double handed sailors must keep out of the starting zone whilst solo sailors are in start procedure. This Starting zone is a rectangle including the starting line plus 100 meters each side, and 200meters on the off course side.

-START TIMING.

SOLO SAILORS. « Performance and Croiseur »Class

Start procedure is 8 minutes from Warning Signal, this change RRS 26

Hoist of the Orange Flag at least 5 minutes before Warning Signal.

13h00 T.U: Warning signal, Hoist of the flag « **Transquadra Blue** ».

+ sound signal

13h04 T.U: Preparatory Signal. Hoist of flag « **P** ».

+ sound signal

13h07 T.U : Lowering of « préparatory signal », « **P** ».

+ sound signal

13h08 T.U : Start Signal lowering of the flag« **Transquadra Blue** ».

+ sound signal

DOUBLE HANDED. « Performance et Croiseur »Class

Start Procedure is 8 minutes beginning 20 minutes after Solo Sailors start signal.

Start procédure:

- 8 mn : Warning signal, Hoist of the flag « **Transquadra Yellow** »

+ sound signal

- 4 mn : Preparatory Signal. Hoist of flag « **P** ».

+ sound signal

- 1 mn : Lowering of « préparatory signal », « **P** ».

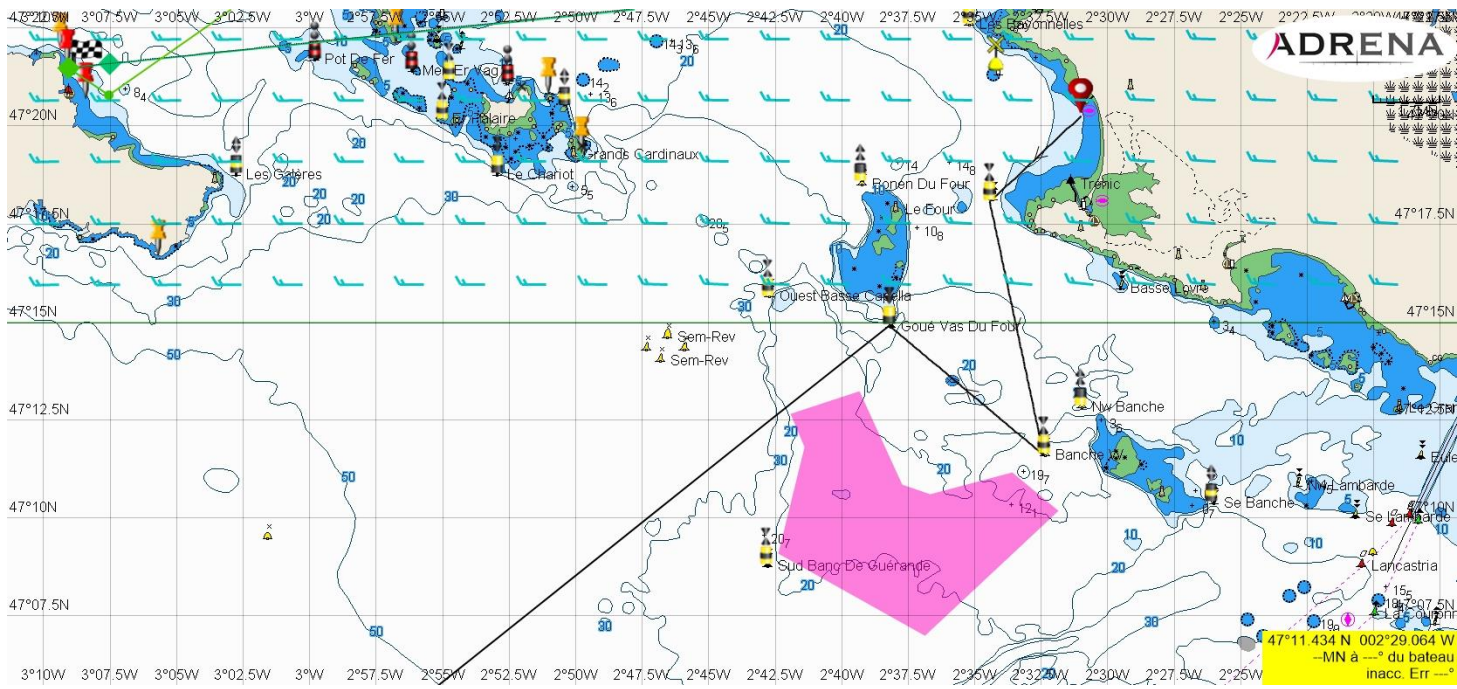
+ sound signal

00mn : Start Signal lowering of the flag« **Transquadra Yellow** ».

+ sound signal

- ROUTE

- Buoy « Basse Castouillet » leave on Port.
- Buoy « Banche W » round and leave to Starboard.
- Buoy « Goue Vas du Four » round and leave to Port.

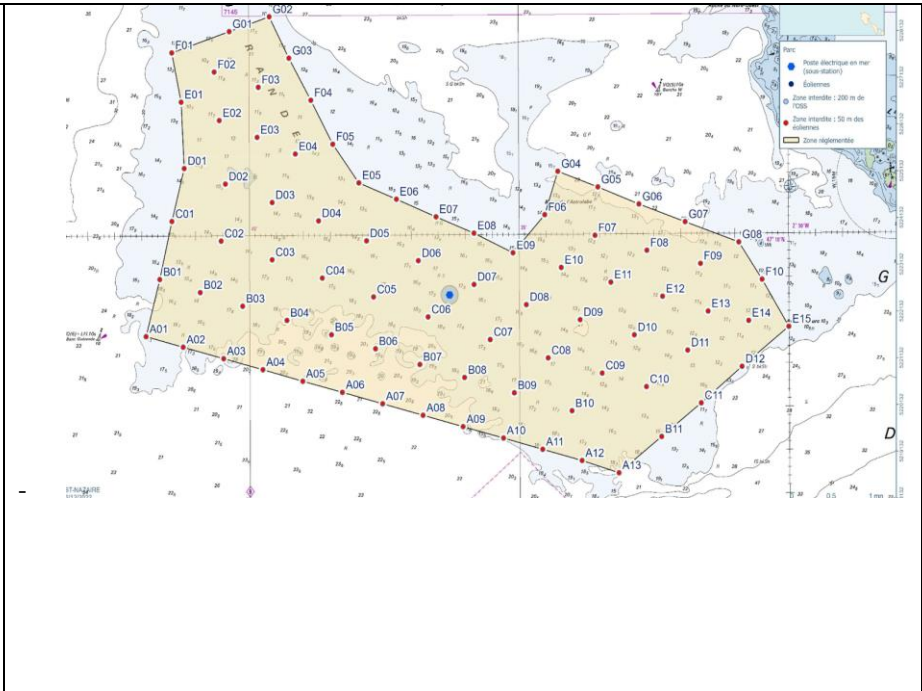


- Saint Nazaire Wind Farm

Sailing inside the St Nazaire Wind Farm zone is **prohibited** during the race :

This prohibited zone is defined by these points :

Pt	Latitude	Longitude
G02	47°12,527 N	002°39,619 W
F01	47°12,114 N	002°41,431 W
E01	47°11,544 N	002°41,260 W
D01	47°10,778 N	002°41,206 W
C01	47°10,167 N	002°41,439 W
B01	47°09,479N	002°41,667W
A01	47°08,839 N	002°41,925 W
A13	47°07,239 N	002°33,168 W
E15	47°08,917 N	002°30,006 W
G08	47°09,896 N	002°30,925 W
G04	47°10,724 N	002°34,275 W
F06	47°10,224 N	002°34,521 W
E09	47°09,786 N	002°35,113 W
E05	47°10,603 N	002°37,970 W
F05	47°11,051 N	002°38,449 W
G02	47°12,527 N	002°39,619 W



- « **Cap Finistère** »TSS.

Sailing inside the « Cap Finistère »TS Sis **Prohibited** whilst racing

This prohibited zone is defined by following points A, B, C, D, E, F as follow :

A Point: 43°31.400 N 010°05.150 W

B Point: 43°21.000 N 009°36.400 W

C Point: 43°10.500 N 009°44.000 W

D Point: 42°52.900 N 009°44.000 W

E Point: 42°52.900 N 010°13.700 W

F Point: 43°18.800 N 010°13.700 W

- « **Cape Roca** »TSS (Lisboa)

Sailing inside the « Cape Roca »TS Sis **Prohibited** whilst racing

This prohibited zone is defined by following points A, B, C, D, E as follow :

A Point: 38°51,900 N 010°13,810 W

B Point: 38°51,900 N 009°41,150 W

C Point: 38°39,750 N 009°40,000 W

D Point: 38°33,900 N 010°11,700 W

E Point: 38°40,950 N 010°13,900 W

Fora Island(Farol, Archipel de Madère) round and leave to starboard.

THE ARRIVAL :

After passing Fora island,sailors will contact Race Comitee on VHF Chanel 9 to advise of their arrival,if needed renew calling until contact with race comitee is established.

Arrival line set close to Quinta do Lorde marina, is established in line from GPS point : 32°44,360 N / 016°42,950 W to leave on Port and green South quay beacon of Quinta do Lorde marina to leave on starboard.

At Arrival crossing sailors must register their arrival in UTC time and acknolege with race comitee

After crossing the line, sailors will sail toward Funchal marina, engine will be allowed.

Life raft and Emergency water tank seals checks of will be done at Funchal.marina

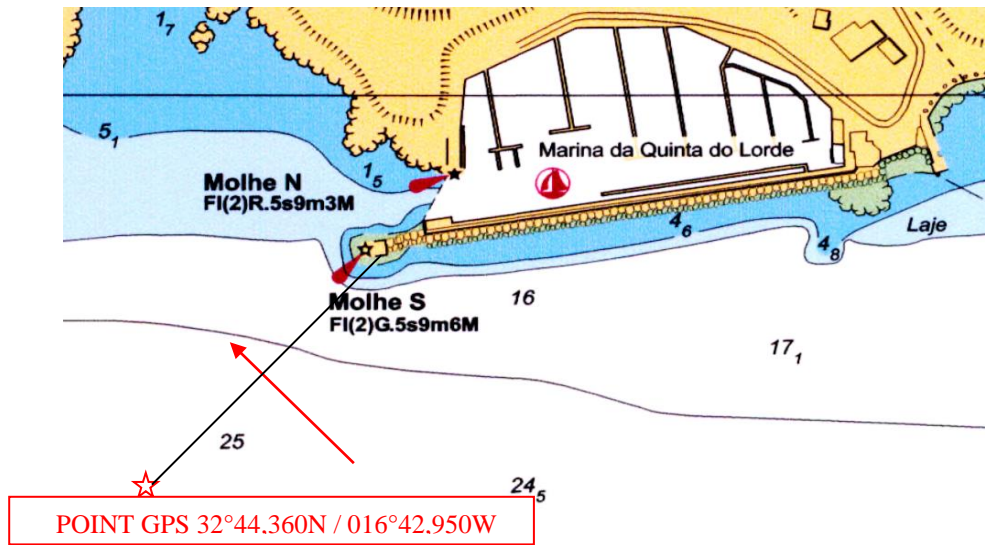
RACE TIME LIMITS :

There is no race time limits.

ARRIVAL IN MADEIRA

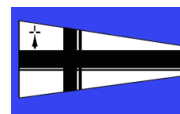
(Red arrow is for information only, and cannot be accepted for redress hearing)

ARRIVAL LINE in QUINTA DO LORDE



FUNCHAL HARBOUR
How to enter TQS Marina in Funchal.





CLUB NAUTIQUE HOEDICALIS

'Portons, la mer est belle'

TRANSQUADRA – MADERE – MARTINIQUE

2024/2025

Marseille – La Turballe - Madère - Le Marin

3 juillet 2024 - 19 février 2025

Race Director **RED** contact

Only for race use in an emergency or technical and medical issue....

+33 6 12 25 31 31

Gris Nez MRCC : + 333 21 87 21 87

gris-nez@mrccfr.eu

Etel MRCC : + 332 97 55 35 35

etel.mrcc@developpement-durable.gouv.fr

Med MRCC: + 334 94 61 16 16

lagarde@mrccfr.eu

West Indies MRCC: [+ 596 596 70 92 92](tel:+596596709292)

fortdefrance.mrcc@developpement-durable.gouv.fr

CCMM Toulouse Médical : +335 34 39 33 33

ccmm.secretariat@chu-toulouse.fr