

CLUB NAUTIQUE HOEDICALIS

'Partons, la mer est belle'

**TRANSQUADRA - ATLANTIQUE - MADÈRE - MARTINIQUE
TRANSQUADRA - MÉDITERRANÉE - MADERE - MARTINIQUE
2024 - 2025**

2nd Race

**ANNEXE PARCOURS MADERE – LE MARIN
Approx 2 685 Nm**

Start Saturday February 1st 2025

1st Start : single handed. Warning Signal at 3 :00PM

2nd Start : double handed. Warning Signal 20 minutes after Single Start signal.

VHF CHANEL FOR START: 77

VHF CHANEL ON ARRIVAL: 72

SINGLE HANDED.

Hoist of Orange Flag at least 5 minutes before Warning Signal.

H' - 8 min : Warning Signal : Hoist of « TRANSQUADRA BLUE »Flag	+ sound signal
H' - 4 min : Preparatory Signal : Hoist of « P »Flag	+ sound signal
H' - 1 min : Removal of « P » Flag	+ sound signal
H : 0 : Start Signal :Removal of « TRANSQUADRA BLUE »Flag	+ sound signal

DOUBLE HANDED.

H' - 8 min : Warning Signal : Hoist of « TRANSQUADRA YELLOW »Flag	+ sound signal
H' - 4 min : Preparatory Signal : Hoist of « P »Flag	+ sound signal
H' - 1 min : Removal of « P » Flag	+ sound signal
H : 0 : Start Signal :Removal of « TRANSQUADRA YELLOW »Flag	+ sound signal

1. The Start :

A : Starting Zone: South of «l'Ilheu do Gorgulho» island close to « Clube Naval do Funchal »

B : Starting Line

The Starting line will be defined by :

- The pole hoisting the Orange Flag on the comitee boat, to be left to Starboard,
- And the on course side of the pin end buoy (red cone) to be left to Port.

2. Marks :

- Offset mark (if provided) (Red Cone)
- « L'îlet Cabrits »island south of la MARTINIQUE
- MA 1 Starboard lateral mark red, (position 14°26.80 N - 60°53.85 W ,1 red flash 2,5 s)
- MA 2 Port lateral mark green, (position 14°26.74 N - 60°54.26 W ,1 green flash 2,5 s)
- MA 3 Starboard lateral mark red (position 14°26.84 N - 60°53.57 W ,2 red flashes 6 s)
- MA 4 Port lateral mark green (position 14°27.00 N - 60°53.30 W ,3 green flashes 12 s)

Coordinates are given for information only, and won't be ground for redress ; sailors must check it by themself.

Caution lateral buoyage in West Indies is of I.A.L.A « B » region.

3. The Course :

After crossing the starting line, set course to the following marks :

1. Starting line and if provided the offset mark
2. « L'îlet « Cabrits » island to be rounded and left to starboard
3. MA 2 to be left to Port
4. MA 1 to be left to Starboard
5. MA 3 to be left to Starboard
6. Arrival (as below).

4. The Arrival :

The arrival line is defined as follow :

From lateral buoy MA4 (Green 3 green flashes 12S) to be left to Port,

To the pole hoisting Blue flag on the comitee boat, moored approximately 0,1Nm SSE from MA4 to be left to Starboard.
(if possible comitee boat will display, at night, a White flashlight).

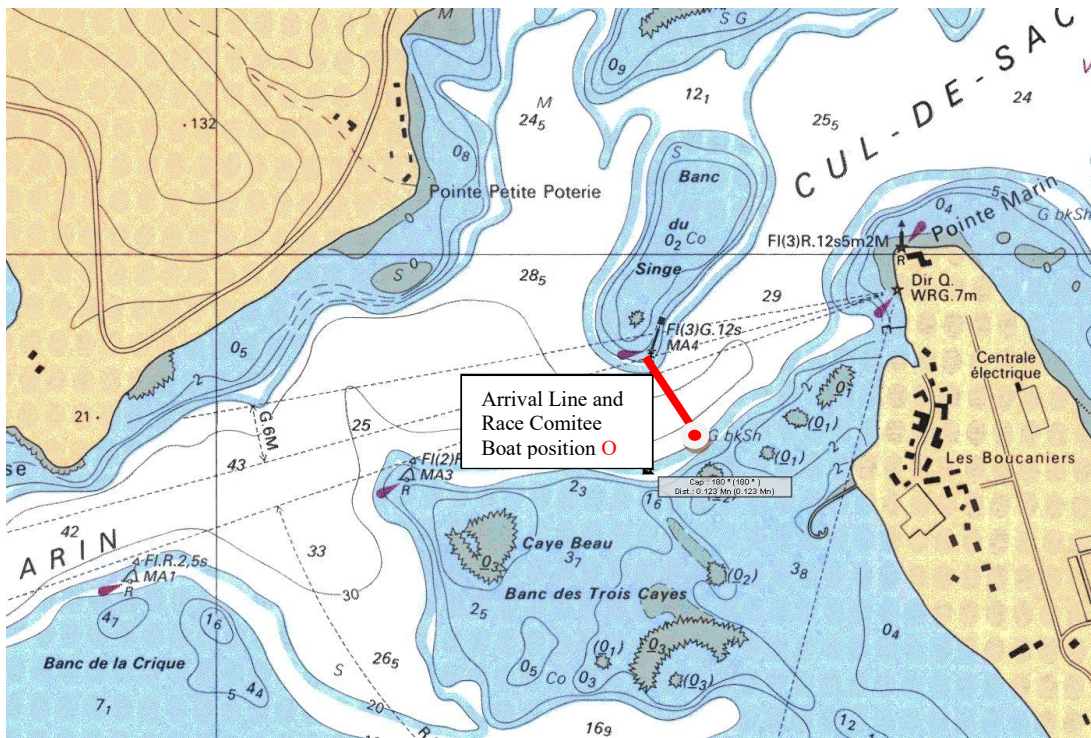
After passing « l'îlet Cabrits » island sailors must call, with their Race number, Race Comitee Boat on Chanel 72, and call again until contact is established with Race Comitee,.

Sailors must register their Arrival Time 'UTC' (and at night light their Sail Numbers) and fill it on arrival form at pontoon.
Technical comitee will perform checks at pontoon.

Nobody is allowed to board before Technical Comitee checks (except for Transquadra Media Staff)

From February 20th at 10:00AM Local Time the arrival line will be lifted.

When passing MA4, sailors will transmit to Race Comitee their arrival time (UTC)



Emergency Contact :
Race Director phone number is :

+33 6 12 25 31 31

To be used ONLY by Sailors during the race.